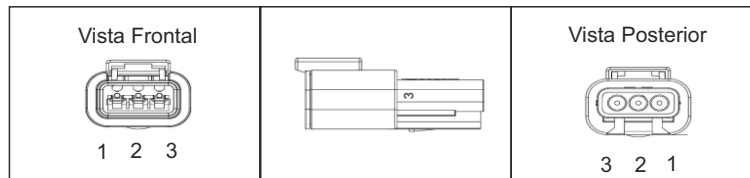


LC 1.2t Celda de carga aluminio 1.2t

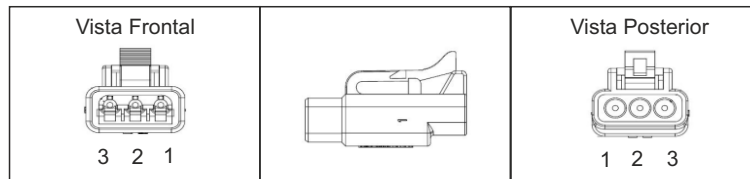


Pines	Funciones	Colores
1	GND	Negro
2	Sign	Blanco
3	12V	Rojo

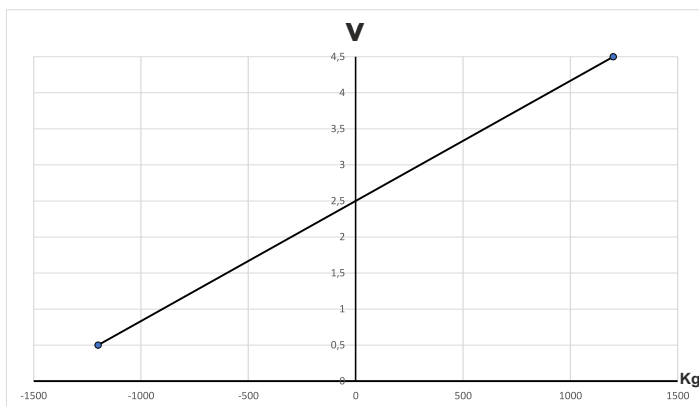
ATM04-3P



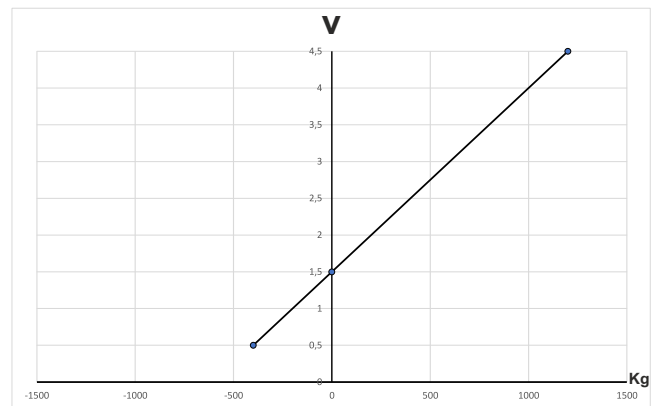
ATM06-3S

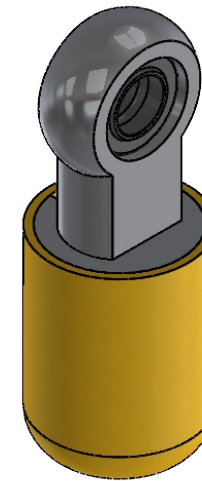
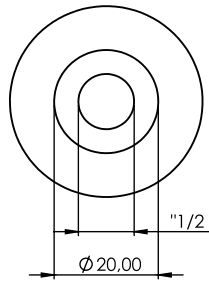
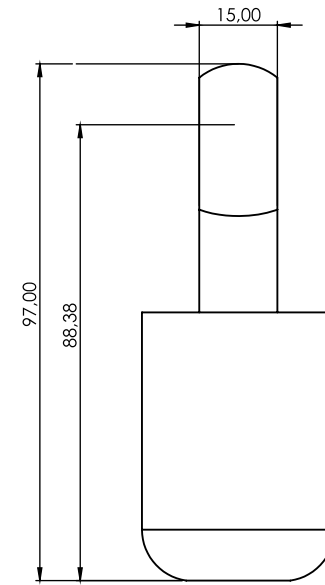
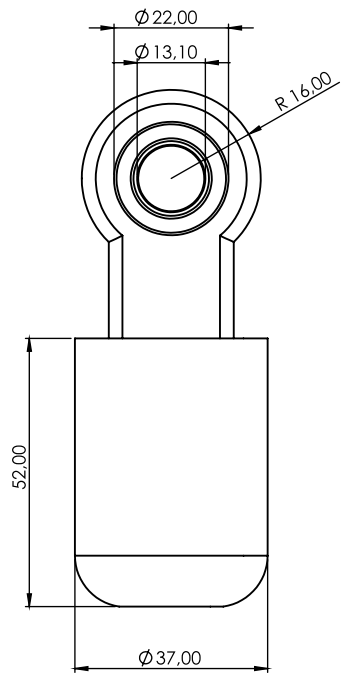


Calibración Estandar



Calibración Típica





Tolerancia gral.	Escala 2:1		Denominación: Celda de Carga Descripción: Celda de carga aluminio 1.2t	Nº Plano 1
Rugosidad gral.	Formato A2			Revisión
Dibuj.				
Vent.				
Parab.				